



The state is normally abbreviated, IND., unless listed (ie: IN)

The following are illustrations of Types with a PIC Type Note in the listings.



0.4662 Multi-subject device



0.4663 multi-subj dev w/ line staggered T/T/T



2.42142 top line spaced



2.46 fancy box line



2.66(1/9)



0.462454 bar A&B



7.4662 single-line roller

SLR



2.66 box cancel with 2 in the device



1.5544 integral Paid.



0.4214 bars



0.4273

The following are examples of different styles found from Indiana towns, with type numbers.



1.1143



1.2243



1.2254 ASA



1.45624



1.5284



2.1663



2.4214



2.425



2.4264



2.4263



2.4273



2.4282 CON



2.4283



2.44(5/9)



2.4514



2.46



2.460005



2.461 CON



2.4614



2.4614 CON



2.465



2.4653



2.4664



2.466454



2.4666



2.4674



2.467405



2.469



2.46(1/9)



2.48(17/87)

SAINT MARY-OF-THE WOODS



2.5214 and a second example



2.525 and another town



2.56 heavy impr



2.5614



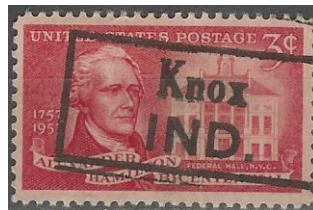
2.6*6



2.625



2.64(5/9) and a later example



2.66 and sim 2.66 CON



2.66(44/94)



2.669



4.4154



4.4213



4.42(13/73)



4.4273



4.4274



4.4612



4.4613 and a variety



4.46134



4.46434



4.46(13/44)3 and a clear copy



4.4643 long-box roller



4.4644



4.48(13/73)



4.6253 and a pretty one



4.4644



NPA error in device



4.7663



7.4643 dbl-line roller



Same DLR multi subj



SLR 7.4663 single-line roller SLR 7.4673 ST. MARY OF THE / WOODS, IND.



Type	Note	INDIANA Town	March 19, 2019	Note	Usage
2.4664		AKRON,			1925SD
4.4253		AKRON			1923, 26, 38
2.46		ALBANY,			1923, 26
2.666		ALBANY			1938
2.4663		ALBION,			1926, 38, 40
2.4653		ALBION,			1938, 54
2.4694		ALBION,			1926, 30, 31, 32
2.4293		ALBION,			1926, 30, 31, 38
2.460005		ALBION, / IN			1959D, 68
2.4654		ALEXANDRIA		CQ	1926
4.4613		ALFORDS- / VILLE, IND.			1926
2.4664		AMBIA,			1926, 34
4.4644		AMBOY			1938
4.4614		ANDERSON			1922, 26, 30, 31, 32
2.460005		ANGOLA / IN		CQ	1968
2.46		ARCADIA			1917
2.465		ARCADIA		CQ	1917
2.4263		ARCADIA		CQ	1926, 31, 37, 38
2.4653		ARGOS,			1938
2.4293		ARGOS		CQ	1938
2.64(5/9)		ARGOS			1931D, 54, 61
0.4214	PIC	ARLINGTON			1926, 32, 34
2.4663		ARLINGTON		CQ	1938
1.1243		ASHLEY,			1926
1.1173		ASHLEY,			1934, 38
2.4674		ATLANTA		CQ	1932
2.464555		ATTICA, / IN			1987
2.4594		AUBURN			1917
2.46		AUBURN		CQ	1917, 17D, 22
2.4694		AUBURN,			1917
4.42531		AUBURN			1917D, 22, 26, 31, 32
2.46		AURORA,			1908, 22, 26, 33
2.46		AURORA			1917
2.4644		AURORA			1917D, 21
2.469		AURORA			1938
2.669		AURORA			1938
2.4214		BATESVILLE		CQ	1914, 26
2.4243		BATESVILLE,			1926, 31, 38
2.4263		BATESVILLE,			1926, 30, 31D, 32, 34, 36
2.46	CON	BATESVILLE		CQ	1954
2.46151		BATESVILLE,			1926, 32

2.467005		BATESVILLE / IN	1959D
2.569		BATESVILLE,	1922
2.428		BERNE,	1922
2.4664		BERNE,	1922, 26
2.46		BERNE,	1922, 23
2.46	CON	BERNE,	1938, 56, 64
2.429		BERNE,	1922, 32
2.4293		BERNE,	1926, 30, 31, 32, 38
2.42936		BERNE	CQ 1926
2.4294		BERNE,	1926, 31, 38
2.6664		BERNE	1938
1.1143		BIRDSEYE,	1923, 32
2.64(5/9)		BIRDSEYE	1954
1.1644		BLOOMFIELD,	1923
2.4214		BLOOMINGTON,	1914, 17
2.461		BLOOMINGTON	CQ 1922
2.66		BLOOMINGTON	1922, 23
4.4613		BLOOMINGTON,	1922, 23, 26, 28SD
4.46131		BLOOMINGTON	1926
2.4614		BLUFFTON	1926, 30, 32
2.4293		BORDEN,	1938
2.46	CON	BORDEN,	1958
2.4664		BORDEN,	1932
2.4694		BORDEN	1938
2.46		BOSWELL,	1926, 32
2.466454		BOSWELL,	1938, 54
2.4653		BOURBON,	1938
2.4663		BOURBON,	1938
2.466454		BOURBON,	1938
2.64(5/9)		BOURBON	1954
1.1253		BRAZIL,	1932
2.46		BRAZIL,	1922, 32
4.4273		BRAZIL	1926, 31D, 32
4.46444		BRAZIL,	1922, 25
7.4644	SLR	BRAZIL	1926, 29
2.46		BREMEN,	1926
2.46	CON	BREMEN,	1938
2.46006	CON	BREMEN,	1954
2.4653		BREMEN,	1938
2.4293		BREMEN,	1931D, 38
4.4274		BREMEN	1926, 32
7.4643	DLR	BREMEN	1917, 26
2.46		BRISTOL,	1922, 31, 32

2.4263		BRISTOL,		1938
2.4264		BROOK	CQ	1931
2.4662		BROOKSTON,		1931, 38
4.4643		BRYANT		1918
2.4264		BUTLER	CQ	1914
2.46		BUTLER	CQ	1912
2.4694		BUTLER		1938
2.46	CON	BUTLER,		1938
7.4643	DLR	BUTLER		1917, 22, 26, 30, 31, 38, 43, 45
0.425	PRO	BUTLER,		1922, 23, 26
2.4293		BUTLER	CQ	1931, 32
2.421		CAMBRIDGE CITY	CQ	1918
2.461		CAMBRIDGE CITY,		1926, 34
2.4613		CAMBRIDGE CITY	CQ	1926, 31, 38
2.56		CAMBRIDGE CITY,		1938, 54
2.66		CAMBRIDGE CITY		1938
4.4643		CAMBRIDGE CITY	CQ	1926
2.467005		CAMDEN, / IN		1972
0.4613		CAMPBELLSBURG,		1926, 29, 30, 32, 38
2.4643		CAMPBELLSBURG	CQ	1938
2.4614		CAMPBELLSBURG,		1923
2.521		CAMPBELLSBURG	CQ	1908
2.56		CAMPBELLSBURG	CQ	1908
1.1644		CANNELTON,		1922
2.4263		CANNELTON,		1930, 31, 38, 40
4.4254		CANNELTON		1926, 29
4.4274		CANNELTON		1926
2.66		CANNELTON	CQ	1917
2.46	CON	CARBON,		1954
0.4643		CARLISLE		1922, 23, 26
2.46		CARLISLE	CQ	1917
1.2644		CARMEL,		1917D
2.4654		CARMEL,		1938, 54
2.4274		CARTHAGE	CQ	1926
0.4154		CARTHAGE	CQ	1926
2.46		CAYUGA,		1934, 40
0.4614		CEDAR GROVE		1938
2.46		CEDAR LAKE,		1934
2.46	CON	CEDAR LAKE,		1954
2.465		CEDAR LAKE,		1938, 40
2.64(5/9)		CEDAR LAKE	CQ	1938
2.46		CENTERVILLE,		1931D
2.56		CENTERVILLE	CQ	1917

4.4644		CENTERVILLE		1938
1.16		CHARLESTOWN,		1922
2.421		CHARLESTOWN	CQ	1925D, 26, 32
2.64(5/9)		CHARLESTOWN	CQ	1938
2.56		CHARLESTOWN	CQ	1914
2.56	CON	CHARLESTOWN,		1954
2.4243		CHESTERTON	CQ	1932
2.4633		CHESTERTON	CQ	1912
2.46		CICERO	CQ	1938
2.4664		CICERO,		1923
2.4293		CICERO,		1926
2.46	CON	CLAY CITY,		1964
2.4653		CLAY CITY,		1938
2.4663		CLAY CITY	CQ	1938
1.1642		CLAYPOOL,		1938
1.46(43/63)		CLAYPOOL,		1930, 34
2.4663		CLAYPOOL,		1926
2.464555		CLAYPOOL / IN	CQ	1968
2.46		CLAYPOOL	CQ	1926, 31
2.6664		CLERMONT		1938
2.4254		CLOVERDALE	CQ	1926
2.46		CLOVERDALE,		1916
2.66(1/9)	PIC	CLOVERDALE		1938
2.4644		COLFAX,		1954
2.4214		COLLEGEVILLE,		1923, 32
2.66		COLLEGEVILLE,		1908, 14, 17
2.4214		COLUMBIA CITY,		1922, 28, 38
2.4643		COLUMBIA CITY,		1922, 26, 31, 40
2.5214		COLUMBIA CITY,		1908, 14
2.56	CON	COLUMBIA CITY,		1949, 54
2.64(5/9)		COLUMBIA CITY		1938, 54
2.66		COLUMBIA CITY	CQ	1931, 43SD
4.4613		COLUMBUS,		1916, 17, 22, 24
2.4214		CONNERSVILLE	CQ	1916, 17, 22
4.4613		CONNERSVILLE	CQ	1922
2.46		CONVERSE,		1938
2.46	CON	CONVERSE	CQ	1922
2.4663		CONVERSE,		1926, 31
2.46	CON	CORUNNA	CQ	1954
2.46		COVINGTON	CQ	1931, 32
2.460005		COVINGTON, / IN		1975
2.4663		COVINGTON,		1926, 31, 32
2.5644		COVINGTON	CQ	1908

2.425		CRANDALL	CQ	1932
2.4663		CRANDALL	CQ	1932
2.46		CRANE,		1938
2.5214		CRAWFORDSVILLE,		1914, 17, 19
4.4613		CRAWFORDSVILLE		1917, 22, 23, 26, 31, 32
4.4614	CON,PRO	CRAWFORDSVILLE		1922, 23, 26, 30, 31D, 32
4.46131		CRAWFORDS- / VILLE, IND.		1922, 23, 25D, 25SD, 26, 30D
5.341		CRAWFORDSVILLE		1927
2.46		CROMWELL	CQ	1913
2.4646		CROMWELL		1926
2.46		CULVER,		1908, 12
2.46		CULVER		1917
2.46	CON	CULVER	CQ	1938
2.46643		CULVER,		1922, 23, 26
2.4664		CULVER,		1926, 38
2.4263		CYNTHIANA	CQ	1938
2.46	CON	CYNTHIANA,		1964
1.1644	ASA	DALE, IN(D.)		1977
0.4263		DALE		1917D
2.466		DANA,		1908
2.4664		DANA		1938, 54
1.465		DECATUR	CQ	1917
2.46		DECATUR,		1922, 26, 28SD, 30, 32, 38
2.44(5/6)		DECATUR	CQ	1938
4.4614		DECATUR		1926, 32
2.4263		DECATUR,		1938, 45
2.6694		DECATUR	CQ	1931D, 38, 42
2.4663		DELPHI,		1926
2.4263		DELPHI	CQ	1938
2.4293		DELPHI,		1926, 30, 31, 38
4.4644		DENHAM		1938
2.469		DEPUTY		1938
1.4663		DILLSBORO	CQ	1938
1.4573		DILLSBORO,		1954
2.465		DILLSBORO	CQ	1938
2.4294		DUBOIS,		1932
1.4673		DUGGER		1922
4.4254		DUGGER		1922, 23, 26
2.4644		DUNKIRK,		1913, 22
4.4254		DUNKIRK		1922
2.46	CON	DYER,		1931D, 38
2.469		DYER		1954
2.46		EARL PARK	CQ	1923, 26

2.460005		EDINBURG, / IN		1968
2.465		EDINBURG,		1926, 29, 31
2.64(5/9)		EDINBURG	CQ	1938
0.4544	CON	ELBERFELD		1922, 23
2.669		ELKHART		1938
4.4643		ELLETTSVILLE	CQ	1922
2.46		ELNORA,		1932
4.4273		ELWOOD		1926, 30
2.46	CON	ENGLISH,		1954
2.465		ENGLISH,		1922
2.4263		ENGLISH,		1926, 32
4.46144		EVANSVILLE,		1917, 22
4.4613		EVANSVILLE		1922, 26
4.4213		EVANSVILLE,		1922, 26, 32
4.4213		EVANSVILLE		1922, 23, 26, 32
1.1643		FAIRMOUNT,		1938
1.1662		FAIRMOUNT,		1933
2.4214		FARMERSBURG,		1926, 34
2.4644		FARMERSBURG	CQ	1922
2.46		FERDINAND,		1926, 29
2.46	CON	FERDINAND,		1954
2.4653		FERDINAND	CQ	1938
2.4663		FERDINAND,		1938
4.42(54/74)		FERDINAND		1934
2.46	CON	FLORA,		1954
2.4674		FLORA,		1922, 25SH, 31
2.466454		FLORA,		1938
2.464555		FLOYDS KNOBS, / IN		1954, 68
1.4153		FOREST,		1938
2.68(14/54)		FORT BRANCH	CQ	1954
2.4242		FORT BRANCH,		1938
2.46	PIC	FORT BRANCH		1940
4.4643		FORT BRANCH		1922, 23, 25SD, 26
2.46		FORTVILLE,		1922
2.4663		FORTVILLE,		1931
0.4662	PIC,PRO	FORT WAYNE		1908, 10, 11D, 12, 13
0.4663	PIC	FORT WAYNE (IND)	CQ, nSt	1908
2.425		FRANCISCO,		1932
2.56		FRANCISVILLE,		1917
1.6643		FRANKLIN		1916
2.467		FRANKLIN	CQ	1912
1.467365		FREMONT / IN		1954, 63
2.4214		FRENCH LICK,		1922, 23, 26

2.521		FRENCH LICK,		1918
2.66		FRENCH LICK		1914, 17
2.46554		GARRETT	CQ	1917
2.46		GARRETT,		1922, 25
2.4263		GARRETT,		1926
2.46652		GARY	CQ	1908
2.4666		GARY	CQ	1917
1.1253		GARY,		1929
1.1283		GARY		1940
1.1644		GARY,		1932
1.2296	ASA	GARY, (IND.)		1908
2.46		GAS CITY,		1926, 31, 32
2.42142	PIC	GASTON	CQ	1917
1.4273		GASTON		1938, 54
2.4294		GASTON,		1922
4.4153		GENEVA		1922, 26, 32
4.4253		GENEVA		1917, 22
4.42(93/53)		GENEVA		1917
2.4294		GENEVA	CQ	1923
4.4644		GENEVA		1926, 30
1.4643		GEORGETOWN		1938
2.4243		GEORGETOWN,		1922, 26, 38
2.46	CON	GEORGETOWN,		1938
0.462454	PIC,PRO	GLEZEN		1922, 26, 30, 31, 32, 32, 33, 34
2.64(5/9)		GLEZEN		1938, 54
2.425		GOODLAND,		1932
2.46		GOODLAND	CQ	1914
4.4254		GOODLAND		1922
4.4644		GOODLAND		1926, 30, 38
7.4642	DLR	GOODLAND		1917, 25
1.1644	CON,ASA	GOSHEN,		1908
1.46006		GOSHEN / IND. / PAID	CQ	1911D
1.5544	PIC	GOSHEN / INDIANA / PAID		1911D
1.228		GOSHEN,		1911D
1.2183		GOSHEN,		1922
1.2253		GOSHEN,		1911D
1.1662		GOSHEN,		1908, 12, 14
1.4164		GOSHEN,		1926, 31, 32, 33
1.5564		GOSHEN		1926
2.4644		GOSHEN	CQ	1922
2.465		GOSHEN	CQ	1917
4.46441		GOSHEN		1932
2.46		GOSPORT	CQ	1931

2.4293		GRABILL	CQ	1931
2.46	CON	GRABILL,		1938
2.464555		GRABILL, / IN		1968
2.4664		GRABILL,		1940
2.4662		GRANDVIEW,		1926
4.6253		GREENCASTLE		1916, 22
4.4274		GREENCASTLE		1922
4.4254		GREENCASTLE		1926
4.4613		GREENCASTLE		1926, 32, 36, 38
0.4642		GREENCASTLE	CQ	1926
2.46		GREENSBURG	CQ	1912, 14
2.461		GREENWOOD,		1908, 10, 13
2.4263		GRIFFITH,		1938
2.46		GRIFFITH,		1923, 26, 30
2.4644		GRIFFITH	CQ	1961
2.4663		GRIFFITH	CQ	1938
2.4214		HAGERSTOWN,		1925SD, 26, 28SD, 31, 32, 34
2.4644		HAGERSTOWN	CQ	1922
2.4614		HAGERSTOWN,		1938
2.4643		HAGERSTOWN,		1922, 26, 31, 32, 35, 36, 38
2.4654		HAGERSTOWN,		1931, 36
2.625		HAGERSTOWN	CQ	1953
2.46	CON	HAMLET,		1954
2.466454		HAMLET,		1938
2.4653		HAMLET,		1938
2.4674		HAMLET	CQ	1931
1.1614		HAMMOND,		1925
1.2283		HARTFORD CITY,		1917D
2.467		HAUBSTADT,		1963
2.46		HAZLETON	CQ	1918
2.64(5/9)		HAZLETON		1938
2.469		HEBRON		1938
2.4663		HIGHLAND,		1938
0.4252		HILLSBORO		1926, 32, 34A, 38
2.46		HILLSBORO,		1938, 54
2.4293		HOBART,		1926
2.46		HOBART,		1926, 29
2.469		HOBART	CQ	1938
2.666		HOBART		1938
1.1616		HOBBS,		1986
1.166354		HOBBS,		1986
2.4644		HOLTON	CQ	1938
2.465		HOLY CROSS	CQ	1938

2.4663		HOLY CROSS,		1930, 31D, 38
2.46		HOMER	CQ	1932
2.4283		HOPE,		1931
2.4294		HOPE		1922, 26
2.46		HOPE,		1938, 54, 58
2.4264		HOWE,		1932
2.4664		HOWE,		1917, 19
7.4643	DLR	HOWE		1922, 26, 38
2.46		HUDSON	CQ	1922
2.4214		HUNTINGBURG,		1926, 31, 32, 33, 38
4.4634		HUNTINGBURG	CQ	1938
2.64(5/9)		HUNTINGBURG	CQ	1938
2.46		HYMERA	CQ	1917
2.46	CON	HYMERA,		1954
2.46632		HYMERA	CQ	1926
2.64(5/9)		IDAVILLE		1954
1.2613		INDIANAPOLIS,		1938
2.1673		INDIANAPOLIS,		1958
4.42431		INDIANAPOLIS		1926, 32
4.42431		INDIANAPOLIS,		1917D, 22, 23, 25SD, 26, 29, 30, 32
4.423*3		INDIANAPOLIS		1916, 17, 17D, 18, 21, 22, 23
4.423*3		INDIANAPOLIS,		1917D, 18, 22
4.4614		INDIANAPOLIS,		1917, 18
4.4644		INDIANAP / OLIS, IND.		1917, 17D
4.4644		INDIANAP / OLIS, IND.	ePA	1917, 17D
4.4613		INDIANAPOLIS		1916-17D, 22-23, 25SD-26, 29, 31D-32
4.4613		INDIANAPOLIS,		1917, 22, 23, 25SD, 26, 29, 30, 32
4.46134		INDIANAPOLIS,		1922, 23, 25SD, 26
5.161		[INDIANAPOLIS,] [IND.]		1922, 23
2.460005		JASONVILLE / IN	CQ	1968
2.4644		JASONVILLE	CQ	1922, 26, 31
2.64(5/9)		JASONVILLE		1938, 40
4.4613		JASONVILLE	CQ	1932
4.4254		JASPER		1917, 23, 26
2.46		JASPER,		1923
2.4664		JASPER,		1912, 17, 26, 28SH, 31-34, 38
7.4643	DLR	JASPER		1917, 17SD
1.66		JEFFERSONVILLE		1913
2.66		JEFFERSONVILLE	CQ	1913
4.46(14/44)		JONESBORO		1917, 18, 23
2.4644		JONESBORO	CQ	1930
2.4633		KENDALLVILLE		1908
2.56		KENDALLVILLE,		1962

2.66		KENDALLVILLE,		1914
2.6*6		KENDALLVILLE,		1958
2.46		KENTLAND,		1922, 32, 34
7.4643	DLR	KENTLAND		1916, 17
2.46		KEWANNA	CQ	1954
2.4663		KEWANNA,		1926, 31
2.461455		KINGSFORD HEIGHTS / IN	CQ	1968
2.4243		KNIGHTSTOWN,		1926, 40
2.4653		KNIGHTSTOWN	CQ	1926
2.4263		KNOX,		1938
2.4293		KNOX,		1926, 28SH, 30, 38
2.46		KNOX,		1922, 23, 26, 31
2.46	CON	KNOX,		1938, 68, 73, 75
2.4653		KNOX,		1938
2.4664		KNOX,		1922, 25SD, 26, 32
2.46644		KNOX		1938
2.4674		KNOX,		1954
2.64(5/9)		KNOX		1957
7.4643	DLR	KNOX		1917, 23, 68
1.1573		KOKOMO,		1931D
1.16		KOKOMO,		1912
1.1614		KOKOMO	CQ	1931D
1.229		KOKOMO,		1914
0.4273	PIC	KOKOMO		1914, 17, 19, 22, 28-32, 34
7.46(73/72)		KOKOMO		1908
2.4663		KOKOMO		1917
2.467		KOKOMO,		1964
4.46431		KOKOMO		1922,29, 30, 32
4.46431		KOKOMO,		1923, 26
4.46434		KOKOMO,		1917D, 22, 26
4.46434	CON	KOKOMO,		1917, 22, 23, 25, 26
4.4644		KOKOMO		1926, 29, 31
1.4644		KOUTS,		1926
1.5183		KOUTS,		1926, 32
0.264305		KOUTS,		1962
2.625		KOUTS		1938
2.46	CON	LA CROSSE	CQ	1938
2.666		LA CROSSE		1938, 40
2.469		LADOGA	CQ	1926
2.4274		LADOGA,		1940
4.4274		LADOGA		1922
1.164305	CON	LAFAYETTE, IN		1968
4.4213		LA FAYETTE		1922, 26, 30, 32

4.46434		LA FAYETTE		1922, 23, 26
0.4644		LAFAYETTE	CQ	1917
4.4612		LAFAYETTE		1917
4.4613		LAFAYETTE		1926
4.4614		LAFAYETTE,		1923, 26
4.4614		LAFAYETTE		1930, 31, 32
2.4214		LA FONTAINE	CQ	1917
2.4243		LA FONTAINE	CQ	1938
2.46	CON	LA GRANGE,		1954
7.4643	DLR	LA GRANGE		1917, 22, 23, 26, 30D
1.4614	CON	LA GRANGE,		1938
2.46		LAGRANGE	CQ	1922
2.4263		LAGRANGE,		1926, 31, 38
2.46	CON	LAKEVILLE,		1938, 50
1.128		LAPAZ,		1938
1.1674		LAPAZ,		1938
2.46	CON	LAPAZ,		1954
2.4264		LAPEL,		1933
4.4643		LA PORTE,		1917, 22
4.46141		LA PORTE,		1922, 23, 26, 32
4.4614		LA PORTE		1926, 30D, 31D, 32
0.46434		LAPORTE,		1922
4.4253		LAPORTE,		1917, 22
1.2643		LAWRENCEBURG,		1938
2.5214		LAWRENCEBURG,		1908, 12, 17
2.4214		LAWRENCEBURG	CQ	1913
2.4242		LAWRENCEBURG	CQ	1938
2.4614		LAWRENCEBURG,		1926, 38
2.6644		LAWRENCEBURG	CQ	1908
2.64(5/9)		LAWRENCEBURG		1938
2.425		LEAVENWORTH,		1922
2.461	CON	LEAVENWORTH,		1954
1.46726		LEBANON,		1908
4.4253		LEBANON		1922, 26, 30
2.425		LEESBURG	CQ	1932
0.4293		LENOX	CQ	1926
0.4252		LEWIS		1926, 32, 38, 40, 54
1.1643	ASA	LEWIS,		1968
2.46	CON	LEWIS,		1938
1.4294		LEWISVILLE,		1926, 38
2.464305		LEWISVILLE / IN	CQ	1977
1.1644		LEXINGTON,		1917
2.4263		LEXINGTON,		1926

1.1644		LIBERTY,		1912
2.4664	CON	LIBERTY		1908
2.46		LIBERTY,		1908, 17
2.46		LIGONIER	CQ	1908, 12
2.46	CON	LIGONIER,		1954
1.2644		LIGONIER,		1908, 15
2.64(5/9)		LIGONIER		1954
2.4664		LINDEN		1917
2.685		LINTON		1961
2.464555		LITTLE YORK,		1967, 77
2.44(55/64)		LIZTON		1938
2.669		LIZTON		1938, 40
1.2643	PRO	LOGANSPORT,		1923
7.4643	DLR	LOGANSPORT		1917, 19, 21, 22, 26
2.425		LOGOOTE	CQ	1922
2.425		LOGOOTE	CQ	1908
2.46		LOGOOTE,		1938
2.466		LOGOOTE	CQ	1926
0.4663		LOGOOTE,		1926, 31
2.4263		LOGOOTE,		1926, 31
2.625		LOGOOTE	CQ	1938
2.46		LOWELL,		1926, 32
0.4643		LYONS		1917, 18
2.4274		MACY,		1926, 29, 30, 32
4.4253		MADISON		1926
4.4643		MADISON,		1922,23, 25SD, 26
2.46		MARENGO,		1938
2.4644		MARENGO,		1937
2.4653		MARENGO,		1926, 38
4.4254		MARSHALL		1926, 32
2.4262		MARSHALL	CQ	1926
2.6664		MARSHALL	CQ	1938
2.64(5/9)		MARSHALL		1938
2.4214		MARTINSVILLE,		1922, 26, 30, 31, 32, 34, 38
4.46(13/44)		MARTINSVILLE	CQ	1916, 17
2.56	CON	MARTINSVILLE,		1938
2.5263		MARTINSVILLE,		1917
2.625		MARTINSVILLE	CQ	1938
2.64(5/9)		MARTINSVILLE		1938, 49
1.1283	ASA	MATHEWS,		1934
2.56	CON	MEDARYVILLE,		1960
2.6664		MEDARYVILLE	CQ	1931
2.4642		MEDARYVILLE,		1932

2.466454		MEDORA,		1938
2.4254		MENTONE,		1917
2.46	CON	MENTONE,		1937
2.6664		MENTONE		1938
4.4274		MENTONE		1932
2.46	CON	MERAM,		1954
2.64(5/9)		METAMORA	CQ	1954
2.4214		MICHIGAN CITY	CQ	1917, 18
2.56	CON	MICHIGAN CITY	CQ	1908, 14
2.66		MICHIGAN CITY,		1913
4.4614	CON	MICHIGAN CITY		1922, 26, 28sh, 30
0.6543		MICHIGAN CITY	CQ	1932
2.4293		MILAN,		1931, 38
2.46		MILFORD,		1926, 33
2.4664		MILFORD	CQ	1925
2.669		MILLTOWN		1928SH, 38, 40
2.625		MILLTOWN		1938
2.4664		MILROY,		1913
2.466		MILROY	CQ	1938
2.4563		MILROY,		1922
2.56		MISHAWAKA	CQ	1912
2.46	PRO	MISHAWAKA,		1908, 12
4.4643		MISHAWAKA,		1922, 26, 31, 32
2.46	CON	MITCHELL		1918, 22
2.46		MITCHELL,		1922, 26, 32, 34, 36
2.64(5/9)		MITCHELL		1938, 54
4.4253		MITCHELL		1917
2.466		MONON	CQ	1938
2.466454		MONON	CQ	1931
2.4653		MONON,		1938
2.46		MONROE,		1930, 32
4.4253		MONROE		1922, 23, 26, 31, 32, 33, 37
4.4644	PRO	MONROE		1922, 38, 40, 54
2.4214		MONROEVILLE	CQ	1914
2.4243		MONROEVILLE	CQ	1926
2.464555		MONROEVILLE / IN		1967
2.625		MONROEVILLE	CQ	1938
2.64(5/9)		MONROVIA		1954, 55
2.4263		MONTEREY,		1938
2.4263		MONTEZUMA,		1926, 29, 31, 36
1.2543		MONTICELLO,		1928SD
2.4243		MONTICELLO	CQ	1926, 31
2.46		MONTICELLO	CQ	1922, 26

2.44(14/45)		MONTICELLO	CQ	1922
1.5264		MONTPELIER		1938
2.4243		MONTPELIER	CQ	1938
2.465		MOORES HILL	CQ	1917
2.64(5/9)		MOORES HILL	CQ	1938
2.4214		MOORESVILLE	CQ	1922
2.4243		MOORESVILLE,		1926, 31
2.4543		MOORESVILLE		1938
0.4544		MOORESVILLE,		1938
2.461		MOORESVILLE,		1962
2.465405		MOORESVILLE, / IN		1968
2.1543	CON	MOORESVILLE,		1938, 54
2.4643		MORGANTOWN	CQ	1938
1.2543		NAPOLEON,		1938
2.46	CON	NASHVILLE,		1954
		NATIONAL MILITARY /		
2.461	CON	HOME, IND.		1923, 26
1.1642		NEW ALBANY,		1917
0.4214		NEW ALBANY		1926
2.4214		NEW CARLISLE,		1926, 31
2.4253		NEW CARLISLE,		1954
2.6254		NEW HARMONY	CQ	1931
2.4614		NEW HARMONY,		1938
2.4643		NEW HARMONY	CQ	1931
0.4643		NEW HAVEN		1923, 26
2.46		NEW HAVEN,		1926, 38
2.465		NEW HAVEN	CQ	1931D
2.64(5/9)		NEW HAVEN		1938
4.4254		NEW HAVEN		1926
2.4214		NEW PALESTINE	CQ	1938
2.46		NEW PALESTINE	CQ	1938, 54
2.46		NEW PARIS,		1954
2.4644		NEW POINT	CQ	1926
2.666		NEWPORT		1938
1.45624		NEW RICHMOND,		1917, 22
2.4254		NOBLESVILLE,		1926, 30, 33
2.56		NOBLESVILLE	CQ	1908, 18A
2.4214		NORTH JUDSON,		1932, 36
2.66		NORTH JUDSON,		1917
4.4613		NORTH JUDSON	CQ	1926
4.7662		NORTH / JUDSON / IND.	CQ	1917, 22
2.66		NORTH LIBERTY		1914
1.466355	MF	NORTH SALEM / IN	CQ	1954

2.46(1/9)		NORTH TERRE HAUTE		1938
2.66	PIC	OAKLAND CITY / 2 IND.		1918, 19
2.4214		OAKLAND CITY,		1914, 22, 23, 26
2.4243		OAKLAND CITY,		1933
2.46		OAKLAND CITY,		1954
2.461		OAKLAND CITY		1922
2.4614		OAKLAND CITY		1932
2.46144		OAKLAND CITY	CQ	1954
2.4263		OAKTOWN,		1932, 34
2.46		OAKTOWN	CQ	1931
2.4644		OAKTOWN,		1954
1.2243	ASA	ODON,		1917
2.4293		ODON,		1926
2.4263		OLDENBURG,		1931D, 38
2.46	CON	OLDENBURG,		1914
2.46		OLDENBURG	CQ	1926, 29
2.64(5/9)		OLDENBURG		1938, 54
2.6664		OLDENBURG	CQ	1938
1.1613		ORLAND,		1938, 40, 46A
2.465		ORLEANS,		1926
2.4653		ORLEANS,		1938
2.625		ORLEANS		1938
2.46	CON	OSCEOLA,		1954, 60
2.460005	CON	OSCEOLA, / IN		1959D
2.669		OSGOOD		1938
7.4662	SLR,PIC	OSSIAN,		1923, 26
1.1253		OSSIAN,		1922
2.46	CON	OSSIAN,		1938, 54, 68
2.464555	CON	OSSIAN, / IN		1954
2.4664		OSSIAN,		1926
2.4653		OTTERBEIN	CQ	1938
2.625		OTWELL		1954
2.4293		PAOLI	CQ	1926, 31, 40
2.4264		PAOLI,		1932, 33
2.46		PARAGON,		1926, 34
2.464654		PEKIN,		1938
2.4664		PEKIN,		1926, 30, 31
2.46	CON	PEKIN,		1931D
2.4263		PENDLETON,		1926, 31, 32
2.465		PENDLETON,		1944SD
2.4663		PENDLETON,		1926
2.4294		PERU,		1917SD
0.46651		PERU	CQ	1914

2.4263		PIERCETON,		1939
2.666		PIERCETON	CQ	1938
2.46	CON	PLAINFIELD,		1954
2.666		PLAINFIELD	CQ	1940
1.1643		PLAINVILLE,		1908
2.5214		PLEASANT LAKE,		1926, 31, 38
2.4614		PLEASANT LAKE	CQ	1931, 32
2.625		PLEASANT LAKE		1954
2.46		PLYMOUTH	CQ	1912
1.1253		PORTLAND,		1922BH
4.4213		PORTLAND,		1922, 23
4.4614		PORTLAND,		1932
4.46434		PORTLAND,		1922
4.4213		PRINCETON,		1922
4.4213		PRINCETON		1926
2.46		RAMSEY,		1931
1.2143		RAY,		1908
2.46		REELSVILLE,		1938
2.425		REMYNGTON	CQ	1926
4.4613		RENSSELAER	CQ	1926
4.46434		RENSSELAER,		1922, 23
4.6253		RENSSELAER		1917
2.46		REYNOLDS	CQ	1922
1.1614	CON	RICHMOND,		1922, 23, 25
1.26	PRO	RICHMOND,		1919, 22, 23, 24, 25, 26
2.464555	CON	RIDGEVILLE, / IN		1968
2.4663		RISING SUN	CQ	1938
1.4216		ROACHDALE		1926
2.425		ROACHDALE		1938
2.4663		ROACHDALE,		1932
2.625		ROACHDALE		1954
2.46	CON	ROANN,		1954
2.4644		ROCHESTER,		1912
2.46		ROCKPORT	CQ	1922
2.46456		ROCKPORT	CQ	1926
2.4663		ROCKPORT	CQ	1938
2.46		ROCKVILLE	CQ	1931
2.46	CON	ROCKVILLE,		1962
2.4663		ROCKVILLE,		1926, 31, 37
2.6664		ROCKVILLE		1914
4.4613		ROLLING PRAIRIE,		1926, 30, 31, 38
2.46	CON	ROME CITY	CQ	1938
2.4663		ROME CITY,		1938

1.4542		ROMNEY		1938, 54, 62
2.4653		ROSSVILLE,		1938
2.64(5/9)		ROSSVILLE		1954
2.461		ROYAL CENTER	CQ	1954
2.46		RUSHVILLE,		1908
2.64(5/9)		RUSSELLVILLE		1954
2.4243		RUSIAVILLE	CQ	1931
2.460005		RUSIAVILLE, / IN		1968, 71
2.460005		SAINT BERNICE, / IN		1968
1.1674		SAINT JOHN,	ST	1938
2.46		SAINT JOHN,		1954, 63
0.6513		SAINT-MARY-OF-THE-WOODS	CQ	1917, 18
2.48(18/98)		SAINT MARY-OF-THE-WOODS	CQ	1938
		SAINT MARY OF THE /		
7.4673	SLR	WOODS, IND.	ST	1926
1.1613	ASA	SAINT MARY'S		1938
2.4214		SAINT MEINRAD	CQ	1923, 31D
2.5644		SAINT MEINRAD,		1923, 26, 30, 31D
2.4614		SAINT MEINRAD,		1930, 31D, 38, 40
2.625		SAINT MEINRAD	CQ	1938
2.64(5/9)		SAINT MEINRAD		1938, 40
2.46	CON	SALEM,		1954
2.5644		SANTA CLAUS,		1954
2.466454		SEELYVILLE,		1957
2.625		SELLERSBURG		1960
4.4253		SEYMOUR		1923
2.4263		SHELBURN	CQ	1926
2.4663		SHELBURN	CQ	1938
2.460005	CON	SHERIDAN, / IN		1968
2.461	CON	SHIPSHEWANA,		1922
2.425		SHIRLEY	CQ	1938
2.4644		SHOALS,		1938, 54
2.464655		SHOALS / IN	CQ	1966
2.467		SHOALS,		1954
2.625		SHOALS		1938
0.46434		SILVER LAKE,		1926
2.465		SILVER LAKE,		1926
2.64(5/9)		SILVER LAKE		1938
4.4613		SILVER LAKE		1928SH, 38
2.46	CON	SOLS BERRY,		1954
2.4644		SOUTH BEND		1914
4.4213		SOUTH BEND,		1922, 25, 25D, 29-32, 38
4.4613		SOUTH BEND,		1922, 25

2.4242		SOUTH WHITLEY,		1938
2.4643		SOUTH WHITLEY	CQ	1938
2.46(14/94)		SOUTH WHITLEY,		1938, 54
2.64(5/9)		SOUTH WHITLEY		1946
2.4264		SPEED,		1923, 26, 30, 38
2.469		SPEED		1938, 58
4.4253		SPENCER		1932
2.46		SPENCER	CQ	1914
2.46		SPICELAND	CQ	1926, 30
2.46		STAR CITY,		1929, 30
2.466454		STAR CITY		1954
2.4643		STRAUGHN		1923, 26, 34
2.4264		STROH,		1922, 26
4.4613		SULLIVAN		1926, 31
4.4644		SULLIVAN,		1914
4.46434		SULLIVAN	CQ	1917, 23
0.4643		SULLIVAN,		1922, 23, 32
2.46		SUNMAN,		1938
2.46	CON	SUNMAN,		1964
2.4263		SUNMAN,		1926, 38
4.4274		SUNMAN		1926
2.625		SWAYZEE		1954
2.46		SYRACUSE	CQ	1926, 32
1.1284		TELL CITY,		1922
1.425		TELL CITY,		1934
1.1643		TELL CITY,		1926, 30, 34
1.161305	CON	TELL CITY, IN		1981
2.425		TELL CITY,		1926, 32
2.4263		TELL CITY,		1926, 38
2.46		TELL CITY		1917
2.4644		TELL CITY	CQ	1917
2.66		TELL CITY		1917
0.5114		TERRE HAUTE	CQ	1917
1.1623		TERRE HAUTE,		1920
4.4213		TERRE HAUTE	CQ	1917D, 22
4.48(13/53)		TERRE HAUTE		1917
4.4613		TERRE HAUTE		1916, 17, 17D, 25SD, 26, 28SD, 32
4.4613		TERRE HAUTE,		1917D, 22, 23
4.46134		TERRE HAUTE,		1917, 17D, 22, 23
2.66		THORTON	CQ	1917, 26
1.2283		TIPTON,		1924
1.1662		TIPTON,		1924
2.46		TRAFALGAR,		1954

2.46		TROY,		1926
7.4642	DLR	UNION CITY		1917, 18, 22, 23, 26, 32, 34
2.425		UNION MILLS	CQ	1926
4.4274		UNIVERSAL		1926, 32
2.46		UPLAND	CQ	1922, 26
2.4694		UPLAND,		1932, 38
2.669		UPLAND		1954
2.46		URBANA,		1917, 22, 26,
2.46	CON	URBANA	CQ	1938
2.4293		URBANA,		1932, 40
2.46		VALLONIA,		1932
2.64(5/9)		VALLONIA		1938
2.46	CON	VANBUREN,		1913, 22
2.4664		VAN BUREN	CQ	1954
2.4214		VEEDERSBURG,		1926, 31, 36
2.46	CON	VEEDERSBURG,		1954
2.464555	CON	VEEDERSBURG, / IN		1968
2.625		VEEDERSBURG		1928SH, 38
2.625		VERSAILLES		1938
2.561		VETERANS ADMINIS-/ TRATION HOSP., IND.		1930, 37, 38
2.4613	CON	VETERANS ADMINISTRATION HOSP.	CQ	1926, 32
4.4253		VEVAY		1923, 26
2.4293		VEVAY,		1926, 31, 32
2.4664		VEVAY,		1931
4.4613		VINCENNES		1922, 23, 26
2.46	CON	WABASH		1930D, 32
2.46	CON	WAKARUSA,		1938
2.4618		WAKARUSA,		1962
2.4663		WAKARUSA	CQ	1926, 31
2.466454		WAKARUSA,		1938
2.669		WAKARUSA		1940
2.4653		WALTON,		1938, 54
2.467		WALTON,		1954
2.46		WANATAH,		1931
2.46	CON	WANATAH,		1954
1.4543		WARREN	CQ	1938
2.46	CON	WARREN	CQ	1938
4.4274		WARREN		1932
4.46434		WARSAW,		1917, 18, 22, 23, 25SD, 26
4.46144		WARSAW		1922
1.2644		WASHINGTON,		1913

2.4263		WASHINGTON	CQ	1922, 26, 30, 31
2.46		WASHINGTON,		1931D, 62
2.64(5/9)		WASHINGTON		1938
2.46		WATERLOO,		1932
4.4254		WAVELAND		1926, 30, 34
2.46		WAVELAND	CQ	1930
2.64(5/9)		WAYNETOWN		1940
2.425		WEST BADEN	CQ	1926
2.46		WEST BADEN	CQ	1913
2.4214		WEST BADEN / SPRINGS, IND.		1938
2.561		WEST BADEN SPRINGS,		1931, 37
2.6644	CON	WEST BADEN SPRINGS	CQ	1932, 38, 39, 40
2.66(44/94)		WEST BADEN SPRINGS	CQ	1938
2.4263		WESTFIELD,		1938
2.669		WESTFIELD		1938
2.5214		WEST LEBANON,		1913
2.66		WEST LIBERTY		1914
2.4653		WEST MCHENRY / ILL.	CQ, Sta	1931
2.466454		WESTPORT,		1938
2.4613		WEST TERRE HAUTE,		1926, 32
2.64(5/9)		WHEATFIELD	CQ	1938
2.465		WHEATLAND	CQ	1938
4.564461		WHITING		1917
2.425		WILLIAMS	CQ	1926
2.4214		WILLIAMSPORT	CQ	1926, 32
2.46		WILLIAMSPORT	CQ	1922
2.521		WILLIAMSPORT		1932
2.625		WILLIAMSPORT		1954
2.46		WINAMAC,		1926, 31
0.46637		WINAMAC	CQ	1926, 32
2.4663		WINAMAC,		1926
2.466554		WINAMAC,		1938
2.425		WINONA LAKE,		1917, 22
2.4614		WOLCOTTVILLE,		1938
2.4644		WOODBURN	CQ	1938
2.4663		WOODBURN,		1926, 38
2.464555	CON	WOODBURN, / IN		1954, 67
2.4214		WORTHINGTON		1934
2.46	CON	WYATT,		1954
0.4663		YORKTOWN	CQ	1922
2.467455		YOUNGS CREEK, / IN		1967
2.46		ZANESVILLE,		1954